

## Features

- Universal input 90~264V AC
- Direct UK Fixed Plugtop Adapters
- Approved to UKCA, CE, RoHS & REACH
- EN/IEC 62368-1 Safety Approved
- Meets Efficiency Level VI & (EU) 2019/1782
- EMC Class B Certified
- Single Output 5~12V DC
- OVP, OCP, SCP



Ideal Power's 15DYS812-xyW-3 12W AC/DC External Adapter UK Plugtop Power Supply (PSU) Series are certified to UKCA, CE, RoHS, REACH & EN 62368-1/IEC 62368-1 Standards and comply with (EU) 2019/1782, Level VI Efficiency Regulations. These are primarily used in ITE, Audio & Video Industries and customised solutions are available upon request.

### Models

Model Number	Output Voltage V DC	Output Current A	Output Power W	Efficiency %
15DYS812-050210W-3	5	2.1	10.5	79.04
15DYS812-120100W-3	12	1	12	82.96

### Input Data

	Notes	Min	Typical	Max	Units
Input Voltage	100-240VAC +/- 10%	90	--	264	V AC
Input Frequency	50-60Hz +/- 5%	47	--	63	Hz
Input Current		--	0.35	--	A
Inrush Current	At cold start, 100 / 240V AC	0	--	60	A
Leakage Current		--	--	0.25	mA

### Output Data

	Notes	Min	Typical	Max	Units
Output Voltage Range		4.75	--	12.6	V
Ripple & Noise		--	150	--	mVp-p
Over Current Protection	Over Current Point Limited >1.2A				
Short Circuit Protection	Continuous short circuit proof.				
Over Voltage Protection	Will recover if fault condition is removed				

**Environmental Data**

	Notes	Min	Typical	Max	Units
Operating Temperature		0	--	+45	°C
Storage Temperature		-20	--	+80	°C
Operating Humidity		10	--	90	%
Operating Humidity		5	--	95	%

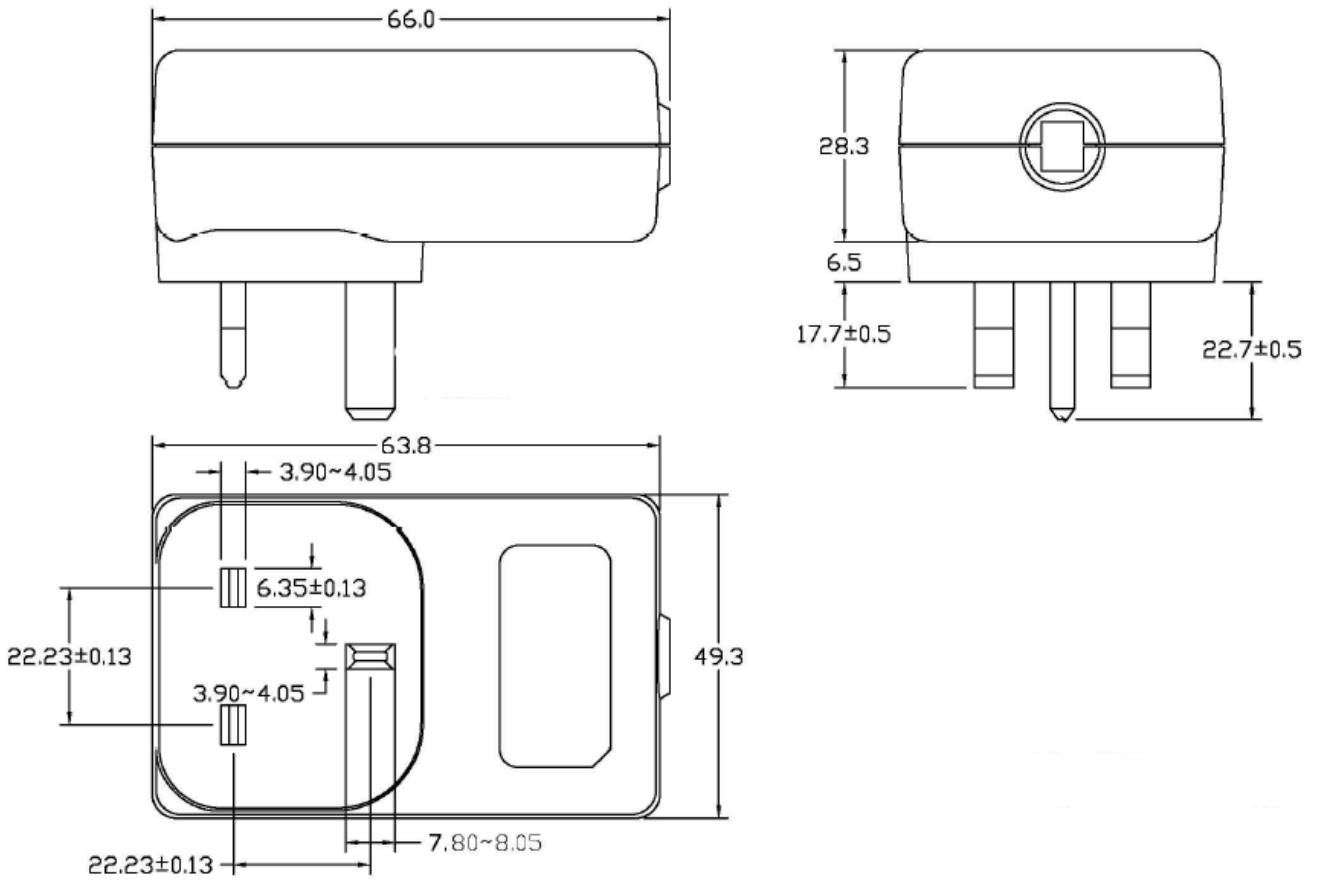
**Other Information**

	Notes	Min	Typical	Max	Units
Insulation Resistance	@ primary to secondary add 500Vdc test voltage	50	--	--	MΩ
MTBF	@ 25°C, Full load, and nominal input connection	--	50,000	--	hrs
Dielectric Strength	Primary to Secondary: 4242VDC / 5mA Max / 60second (3 seconds for mass production)				
Dimensions	66x49.3x52.5mm				
Cable	5V: 22AWG,1.2m / 12V:24AWG, 1.5m – UL2468				
Output Connector	2.1x5.5x12mm				

**EMC Immunity (2014/30/EU)**

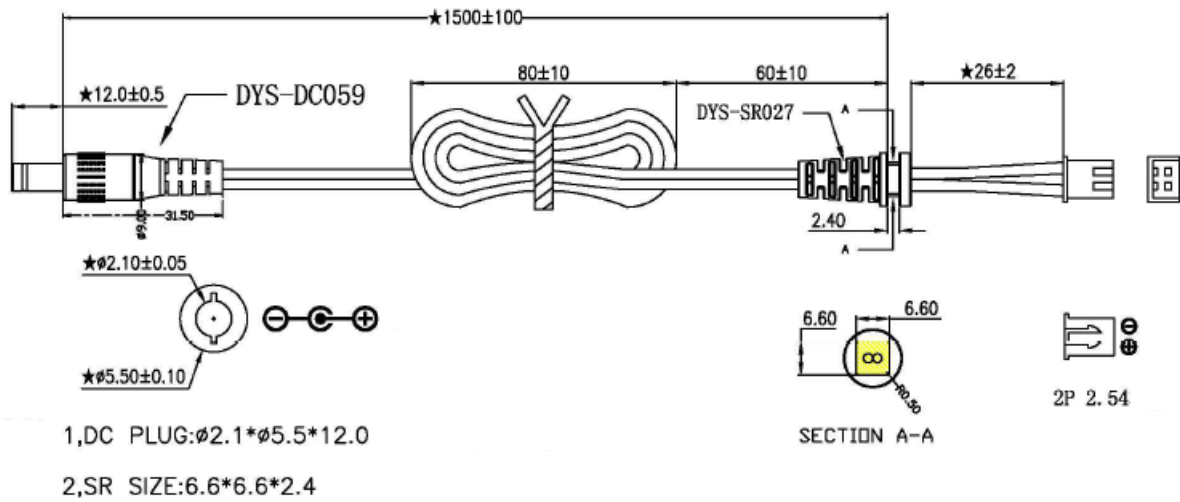
	Standard	Notes	Test Level
EMS	EN 55035		
ESD	IEC 61000-4-2	Contact: +/- 4KV; Air: +/- 8KV	Pass B
EFT	IEC 61000-4-4	0.5/1.0KV on input AC power ports	Pass A/B
Surge	IEC 61000-4-5	Line to Line: +/- 1KV (peak); Line to F.G: +/- 2KV (peak)	Pass A

Mechanical Drawing

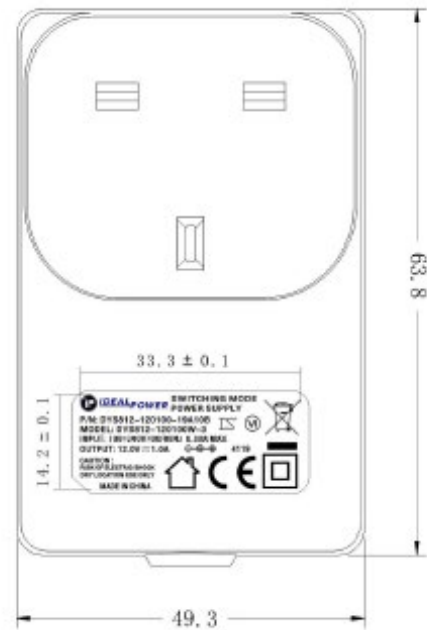
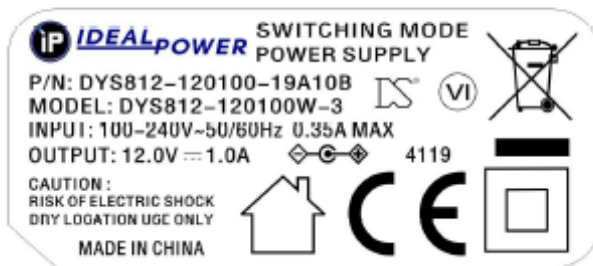


AC – DC

**Cable Drawing**



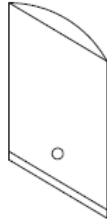
**Label / Markings**



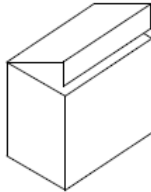
**Packaging**

AC - DC

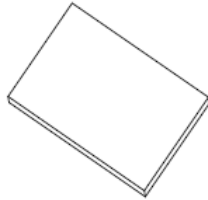
PLASTIC BAG/PE袋



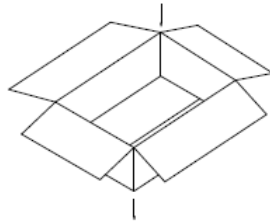
WHITE BOX/白盒



CARDBOARD/纸板



PAPER CASE/纸箱



MECHANICAL DIMENSION:

	L(mm)	W(mm)	H(mm)
PLASTIC BAG	210	130	
WHITE BOX	90.5	53.5	75.5
CARDBOARD	380	285	
PAPER CASE	390	295	330

PACKING METHOD:

PACKING METHOD	20PCS/LAYER *4LAYERS
QTY	80PCS
N.W	8.0Kg
G.W	9.5Kg